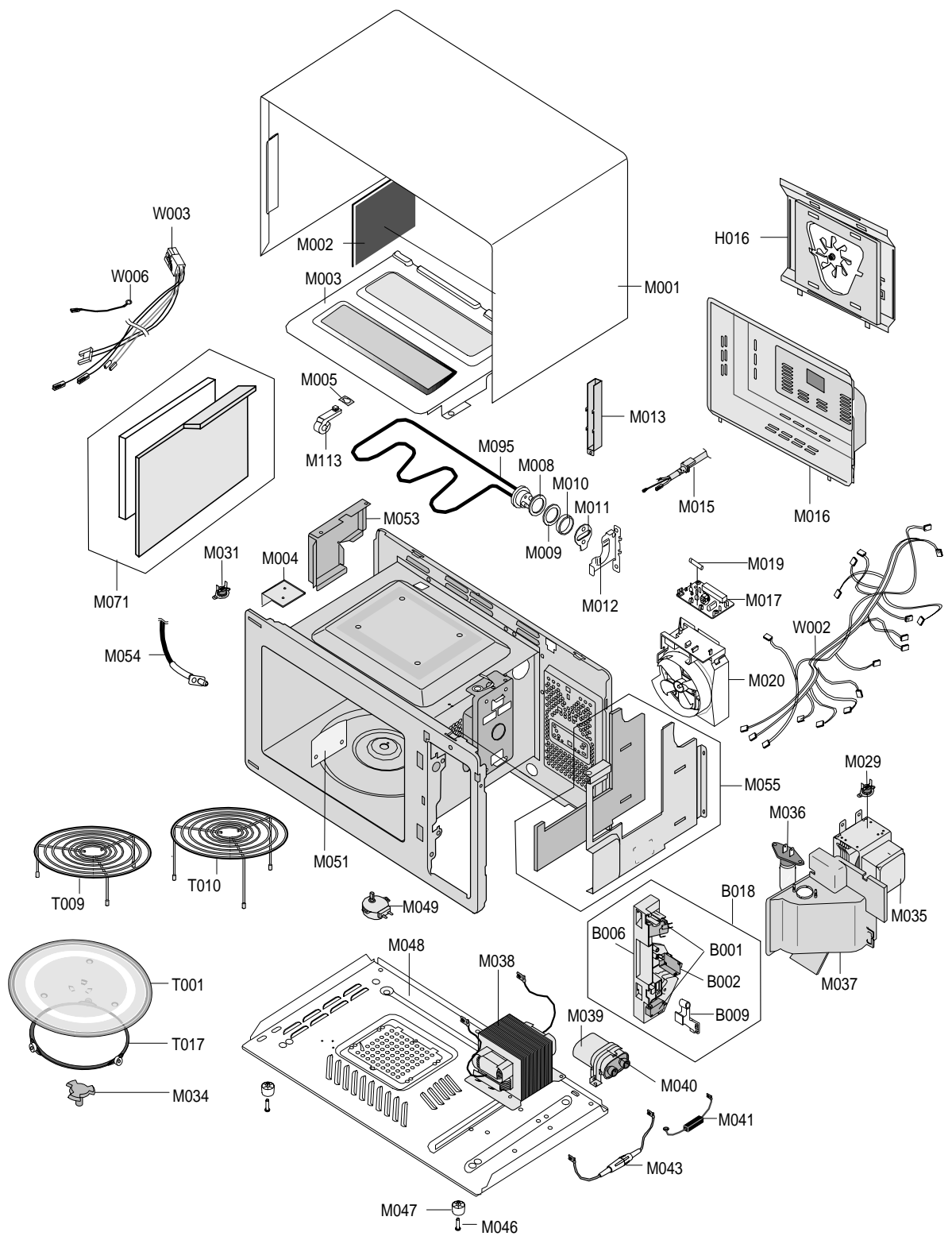


7. Exploded Views and Parts List

7-1 Exploded Views

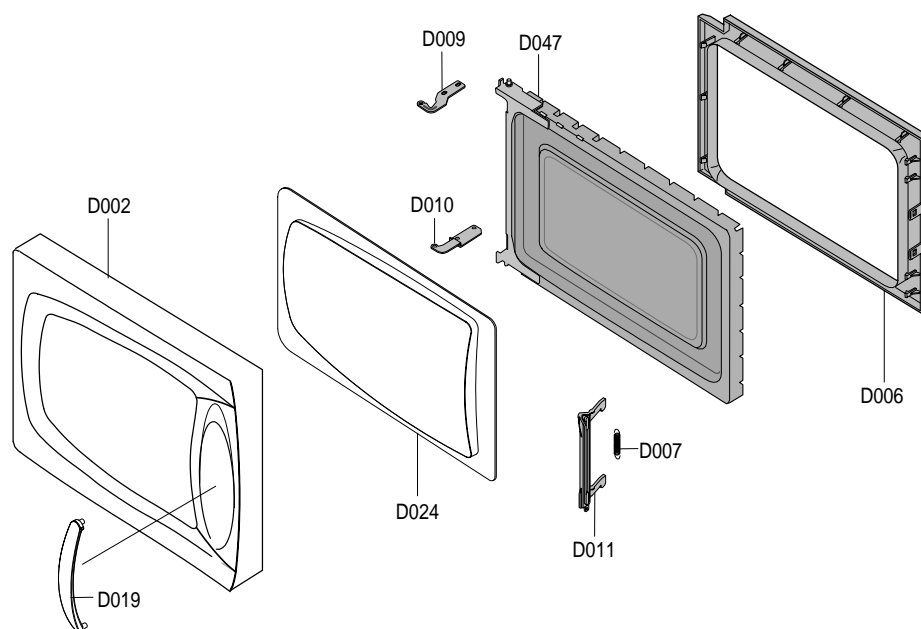


7-2 Main Parts List

No.	Code No.	Description	Specification	Q'ty	Remark
B001	3405-001034	SWITCH-MICRO	125/250VAC,16A,200GF,SPST-N	2	
B002	3405-001032	SWITCH-MICRO	125/250VAC,16A,200GF,SPDT	1	
B006	DE66-40021B	LATCH-BODY	-, -, -, M959/XSA, -, -, -	1	
B009	DE66-90054B	LEVER-SWITCH	NYLON#66(2021SW),40G,M959/X	1	
B018	DE93-20020D	ASSY BODY LATCH	M959/XSA, -, -, -, -	1	
H016	DE92-90478C	ASSY-CASING	CK95, -, -, -, -, -	1	
M001	DE70-30001H	PANEL-OUTER	CE945G,C/STEEL,T0.6,W360,L11	1	
M002	DE63-90035H	CUSHION-RUBBER	-,DFA20,T2,W190,L200,-,-	1	
M003	DE61-50565A	BRACKET-UPPER	-,SECC,T0.5,W362,L294,-,-	1	
M004	DE61-50564A	BRACKET-TCO	-,SECC1,T0.6,W45,L21,-,-	1	
M005	DE61-70060A	SPRING-PLATE	-,SK-5,T0.5,-,-,-,-,-,-,-	1	
M008	DE63-20017A	GASKET-HEATER	-,BRASS,T1.5,OD30.5,ID22.5	1	
M009	DE60-40009B	WASHER-TEFLON	SLOT,ID22.2,OD28,T1.2,TEFL	1	
M010	DE61-50021A	BRACKET-FLANGE	-,SECC1,T0.8,32,32,-,-	1	
M011	DE61-50347A	BRACKET-EARTH	-,BSS2-A,T1.0,W35,L43,MBGF	1	
M012	DE61-50027B	BRACKET-HEATER	-,SECC,T1.0,W51,L55,CE945	1	
M013	DE61-50570C	BRACKET-AIR GUIDE	CK95,SECC,T0.8,-,-,-,D	1	
M015	DE39-00022A	ASSY POWER CORD	-,250V,16A,-,KKP-4819D/B	1	
M016	DE71-60448A	COVER-BACK	CK95,SCP3(Cr),T0.6,-,-,-,-,-	1	
M017	DE96-00011A	ASSY NOISE FILTER	SN-3WUA,250V15A,3W 15A	1	
M019	3601-001197	FUSE-CARTRIDGE	250V,15A,SLOW-BLOW,CERAMI	1	
M020	DE96-00070A	ASSY-MOTOR FAN	SMF-2N2EA1,230V50Hz,2420R	1	
M029	DE47-20009A	THERMOSTAT	PW2N-520PB,160/60,250V/7.5A,H	1	MGT
M031	DE47-20009A	THERMOSTAT	PW2N-520PB,160/60,250V/7.5A,H	1	
M034	DE67-60081A	COUPLER	PPS,-,-,BROWN,3RD-1.0/1.3,-	1	
M035	OM75P(31)ERHN	ASSY-MAGNETRON	OM75P(31)ERHN	1	
M036	4713-001046	LAMP-INCANDESCENT	240V,104mA,25W,ORG,-,-	1	
M037	DE71-60016D	COVER-AIR	CK95,NYLYN#66(TEFRON523),-, -, -	1	
M038	DE26-00080B	TRANS H.V	SHV-EURO2,230V,50HZ,2340V/3.5V	1	
M039	2501-001015	C-OIL	1.0uF,2100V,BK,35X54X80,20mm	1	
M040	DE61-50106A	BRACKET-HVC	-,SECC,T0.8,W31,L125.8,-,-	1	
M041	DE91-70065A	ASSY-HVD	BMP28,SEMA,12KV,SUMI,-	1	
M043	DE91-70061A	ASSY-H.V.FUSE	THV060T-0800-H,5KV/0.80A,W	1	
M046	DE60-60025A	PIN-FOOT	PP-JI350,BLK,-,-,-,-,-	4	
M047	DE61-40065A	FOOT	-,PP,T2x22x17mm,BLK,-,-,-	4	
M048	DE80-10001P	BASE-PLATE	3RD(1.0-NEW),SGCC,T0.8,W345,L	1	
M049	DE31-10170A	MOTOR SYNCHRONOUS	M2LJ24Z702,ST-16F,220/	1	
M051	DE71-00015A	COVER-CEILING	CE2933,-,T0.3,W114.2,L121.	1	
M053	DE72-60035R	GUIDE-AIR	CK135,SECC,T0.5,-,-,-	1	
M054	DE32-10013A	SENSOR THERMISTOR	PT-312-K2,-,-,-,-,-,-	1	
M055	DE92-90555D	ASSY-COVER ADIA(R)	C100,CONV,-,-	1	
M071	DE92-90554B	ASSY-COVER ADIA(L)	C100,CONV,-,-	1	
M095	DE47-00001A	HEATER	SHG-2933E,-,-,1300W(1250W),-,230V	1	
M113	DE61-30006A	SUPPORT-HEATER	-,ALUMINA,5G,2ND-W/P,-,-,-	1	
T001	DE74-20015G	TRAY-COOKING	3RD-1.0,T6,1115G,HKS,-,-,-	1	
T009	DE97-00136B	ASSY-WIRE RACK	CK95,LOW-RACK,-,-,-,-	1	
T010	DE97-00136E	ASSY-WIRE RACK	MG104WA,114,FOOT,VE-TYPE	1	
T017	DE92-90189U	ASSY-GUIDE ROLLER	1.0CUFT(PPS)15.5,-,-,-	1	
W002	DE96-00249A	ASSY-WIRE HARNESS A	C105,230V50HZ,EUROPE	1	
W003	DE39-00042A	WIRE HARNESS-B	C100,230V50HZ,AMFO,-,-,-	1	
W006	DE39-40409A	WIRE HARNESS-E	230V50HZ,M9G45,CTW,-,-,-	1	

7-3 Door Parts List

ASSY DOOR - D049

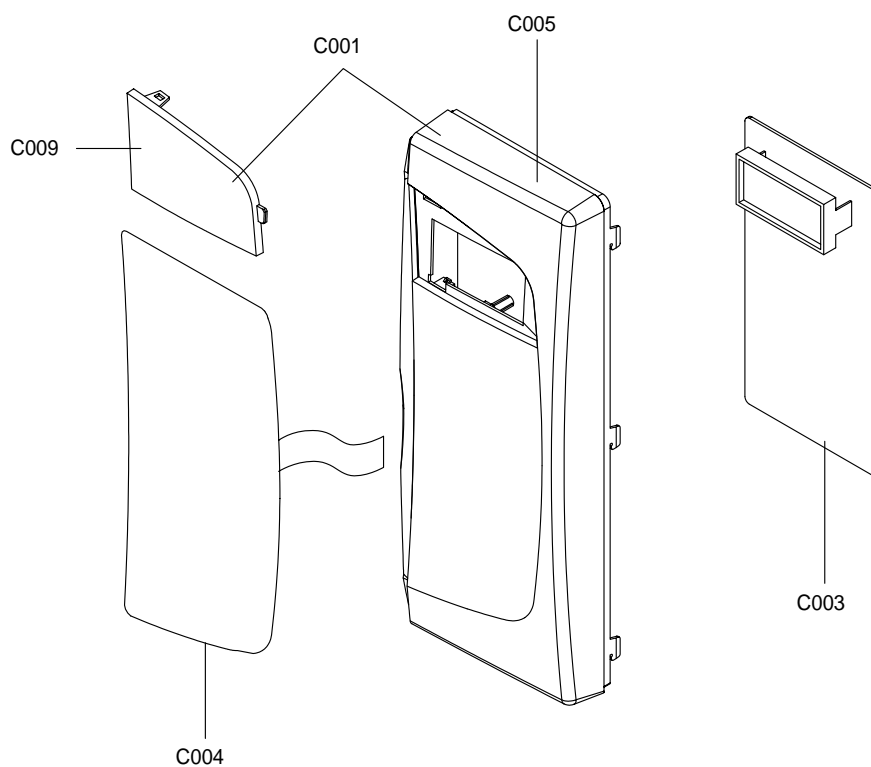


No.	Code No.	Description	Specification	Q'ty	Remark
D002	DE64-00726A	DOOR-A	C105,PC(LEXAN141),PURE-WHT,CONV-1	1	
D006	DE64-40012C	DOOR-C	CK95,PBT,-,-,-,BLK,-	1	
D007	DE61-00199A	SPRING-KEY	M1977,HSWR,D6,-,-,25 1/4,25 1	1	
D009	DE61-80002A	HINGE-UPPER	WHT,SHV-745CC1,SSEC,T2.3,26,	1	
D010	DE61-80003A	HINGE-LOWER	WHT,TN-5630T,SSEC,T2.3,26,77	1	
D011	DE64-00547A	KEY-DOOR	C100,NYLON#66,-,-,-,GV10% V0	1	
D019	DE64-00725B	HANDLE-DOOR	C105,PC(LEXAN141),SILVER,CON	1	
D024	DE64-00802A	SCREEN-DOOR(B)	C105,TEMP-GLASS,T2.0,C-DE	1	
D047	DE94-00075H	ASSY DOOR-E(SEALANT)	C100,SEALANT,3RD-1.	1	
D049	-	ASSY DOOR	C105,WHT,-	1	S.N.A

S.N.A : SERVICE NOT AVAILABLE

7-4 Control Parts List

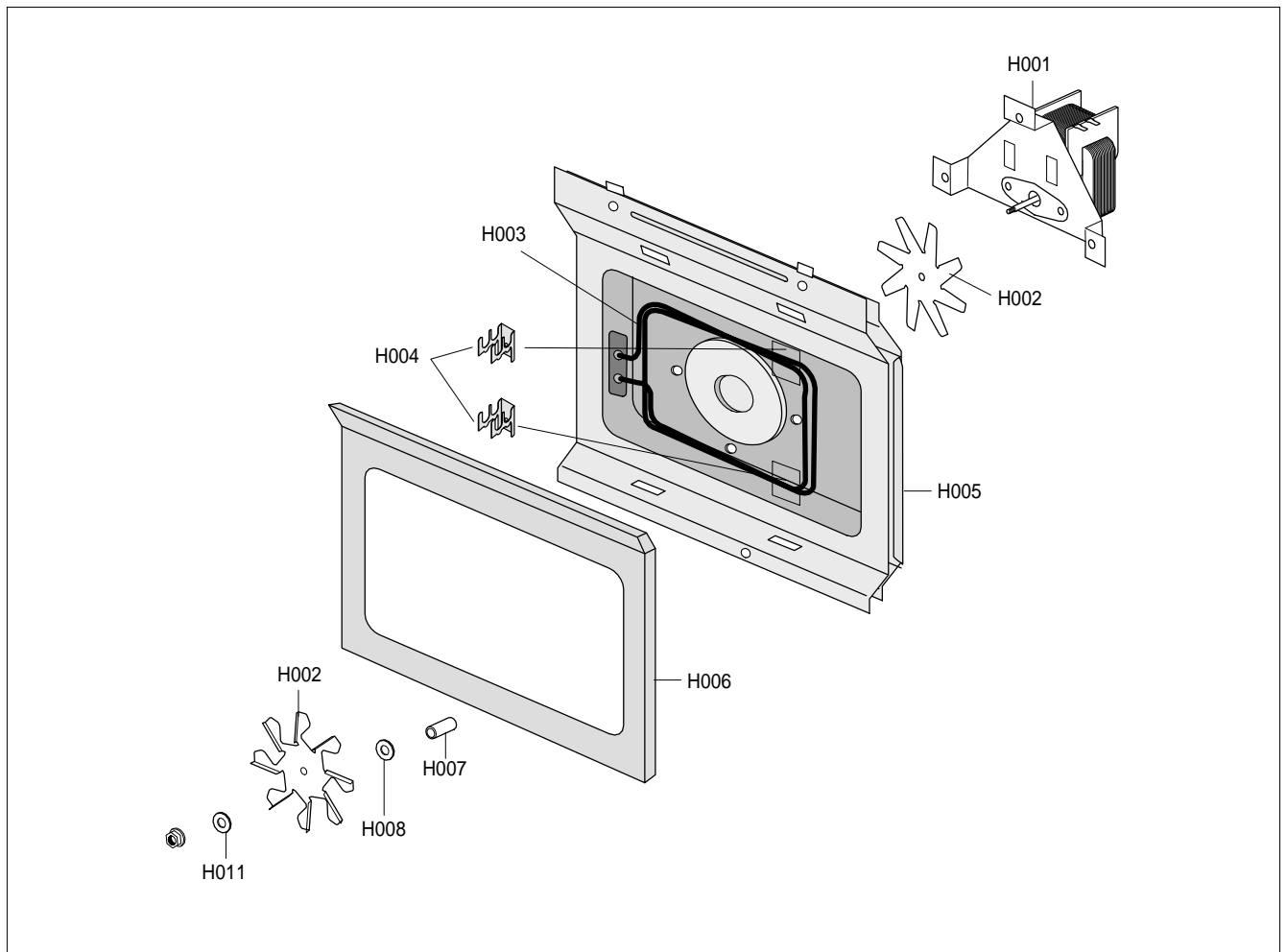
ASSY CONTROL-BOX- C082



No.	Code No.	Description	Specification	Q'ty	Remark
C001	DE94-00982A	ASSY CONTROL-PANEL	-,C106/XEU,WHT,SEUK	1	
C003	RCS-C105-03	ASSY PCB PARTS	C106/XEU,230V50HZ	1	
C004	DE34-00189C	SWITCH MEMBRANE	C106R/BWT,GRAPHIC,-,-,-,230V50Hz,-,-,-,-	1	
C005	DE64-00985A	CONTROL-PANEL	C106,PC(LEXAN141),PURE-WHT	1	
C009	DE64-00732A	WINDOW-DISPLAY	C105,SAN(CR5381),CONV-1.0	1	
C082	-	ASSY CONTROL-BOX	-,C106R/BWT,PC/WHT,RUSSIA	1	S.N.A

S.N.A : SERVICE NOT AVAILABLE

7-5 Casing Parts List



No.	Code No.	Description	Specification	Q'ty	Remark
H001	DE31-10171A	MOTOR CONVECTION	SMC-105EA,230V/50HZ,280	1	
H002	DE31-90019A	BLADE-FAN	SECC,T0.6,-,-,-,-,-	1	
H002	DE31-90020A	BLADE-FAN	ALSTAR,T0.6,W250,L250,-,-,-	1	
H003	DE47-70077A	HEATER-CONVECTION	SHC-118E1,-,-,1680W,-,	1	
H004	DE61-50484A	BRACKET-HEATER	-,STS430,T0.8,W27.2,L26,C	2	
H005	DE92-90487A	ASSY-COVER CASING	CE115K,230V50HZ,-,-,-,	1	
H006	DE62-90098B	ADIABATIC-CASING	-,T8,W245,L336.8,CK95,-	1	
H007	DE72-30016A	BUSH-MOTOR	-,MSWR3,L11.2,D5.6,RE-1300,-,	1	
H011	DE60-40014B	WASHER-C MOTOR	M16,T1.0,SECC,ZNC3,-,-,-,	1	

7-6 Standard Parts List

Code No.	Description	Specification	Q'ty	Remark
DE60-20063A	BOLT-FLANGE	M4,10,ZPC3,YEL,MSWR,-,-,-,-	4	HING-L/U
DE60-30016A	NUT-FLANGE	M4,MSWR10,-,-,-,-,-,-,-	1	SENSOR
DE60-30016B	NUT-FLANGE	M4,MSWR10,FEFN,-,-,-,-,-,-	3	-
DE60-10082H	SCREW-A	-,-,-,-,2S-4X12,TOOTHED,-,-,-,-	5	P-OUTER
DE60-10018A	SCREW-ASSY MACHINE	-,WS,MSWR10,SN1,PH,M4X0.7P,-,8,-,-	2	B-EARTH
DE60-10098A	SCREW-ASSY TAP TITE	-,GLD,SWRCH18A,ZPC2,PH,TC,-,M4X8,WT,-	2	M-DRIVE
DE60-10045A	SCREW-TAP PH	-,-,FEFZY,-,PH,M3,-,L6,-,-	2	-
DE60-10052A	SCREW-TAP PH	-,-,FEFZY,-,PH,M4,-,L8,-,-	2	A-A-RIGHT
DE60-10045A	SCREW-TAP PH	-,-,FEFZY,-,PH,M3,-,L6,-,-	1	-
DE60-10088A	SCREW-TAP PH	-,-,FEFZY,PLAIN,PH,M3,-,L8,-,-	9	-
DE60-10070A	SCREW-TAP TH	-,-,FEFZY,2-SLOT,TH,M4,-,L12,-,-	2	A-A-LEFT
DE60-10070A	SCREW-TAP TH	-,-,FEFZY,2-SLOT,TH,M4,-,L12,-,-	4	A-C-BACK
DE60-10070A	SCREW-TAP TH	-,-,FEFZY,2-SLOT,TH,M4,-,L12,-,-	3	A-CASING
DE60-10070A	SCREW-TAP TH	-,-,FEFZY,2-SLOT,TH,M4,-,L12,-,-	1	A-THERMO-G
DE60-10070A	SCREW-TAP TH	-,-,FEFZY,2-SLOT,TH,M4,-,L12,-,-	1	B-A-GUIDE
DE60-10070A	SCREW-TAP TH	-,-,FEFZY,2-SLOT,TH,M4,-,L12,-,-	2	B-LATCH
DE60-10070A	SCREW-TAP TH	-,-,FEFZY,2-SLOT,TH,M4,-,L12,-,-	1	B-UPPER
DE60-10070A	SCREW-TAP TH	-,-,FEFZY,2-SLOT,TH,M4,-,L12,-,-	1	C-AIR
DE60-10070A	SCREW-TAP TH	-,-,FEFZY,2-SLOT,TH,M4,-,L12,-,-	2	C-BOX
DE60-10070A	SCREW-TAP TH	-,-,FEFZY,2-SLOT,TH,M4,-,L12,-,-	2	M-FAN
DE60-10122A	SCREW-TAP TH	-,-,FE,FN,TAP,TH,-,2-4X8,-,-	3	B-HEATER
DE60-10122A	SCREW-TAP TH	-,-,FE,FN,TAP,TH,-,2-4X8,-,-	2	C-CEILING
DE60-10122A	SCREW-TAP TH	-,-,FE,FN,TAP,TH,-,2-4X8,-,-	1	SENSOR
DE60-10122A	SCREW-TAP TH	-,-,FE,FN,TAP,TH,-,2-4X8,-,-	3	B-C-MOTOR
DE60-10122A	SCREW-TAP TH	-,-,FE,FN,TAP,TH,-,2-4X8,-,-	2	BKT-HEATER
DE60-10122A	SCREW-TAP TH	-,-,FE,FN,TAP,TH,-,2-4X8,-,-	4	CV-CAS
DE60-10012A	SCREW-TAP TITE	-,SWR10,M4,L10,TH,+,-,3,ZPC2,-	1	A-N-FILTER
DE60-10012A	SCREW-TAP TITE	-,SWR10,M4,L10,TH,+,-,3,ZPC2,-	1	A-P-CORD
DE60-10012A	SCREW-TAP TITE	-,SWR10,M4,L10,TH,+,-,3,ZPC2,-	3	B-PLATE
DE60-10012A	SCREW-TAP TITE	-,SWR10,M4,L10,TH,+,-,3,ZPC2,-	1	C-B-EARTH
DE60-10012A	SCREW-TAP TITE	-,SWR10,M4,L10,TH,+,-,3,ZPC2,-	1	M-D-CONVE
DE60-10012A	SCREW-TAP TITE	-,SWR10,M4,L10,TH,+,-,3,ZPC2,-	1	B-T-MOTOR
DE60-10034A	SCREW-TH	-,-,L10,STS304,TH,+,-,M4,-,-	1	SENSOR
DE60-10080B	SCREW-WASHER	-,2S,SWRCH18A,ZP2,PH,PI5,-,L10,-,-	4	MAGNETRON
DE60-10080B	SCREW-WASHER	-,2S,SWRCH18A,ZP2,PH,PI5,-,L10,-,-	4	TRANS-HV